



**A Snapshot of  
The Tailem Bend Community Centre  
Murray Mallee Community Passenger Network**



Providing social interaction, lifelong learning opportunities and transport for the Murraylands community.



## Tailem Bend Community Centre (TBCC) Quick Stats

<b>Location:</b>	Tailem Bend, South Australia (Coorong District Council LGA region)
<b>Service Area:</b>	Tailem Bend and Murraylands surrounds
<b>Employed Staff:</b>	7 staff 6.2 FTE and a contract cleaner
<b>Volunteers:</b>	56
<b>Volunteer Hours:</b>	3,719 (2018/19)
<b>Members:</b>	286
<b>Participants:</b>	328 participants attended 312 sessions/ 5,407.8 hours
<b>Facilities:</b>	Function room (fully equipped), various outbuildings/workshops for classes, commercial kitchen and facilities for hire, catering services, community bus hire, medical bus brokerage and Community Passenger Network Administrative services

<b>Activities:</b>	<p><b>Social Support classes</b> 20 per week I.e. exercise, sewing, IT, craft, woodworking, mosaics, leadlight</p> <p><b>Evidence Based programs for parents/kids</b> -Our Time Parent Child Mother Goose, Tuning into Kids, Seasons for Growth, Drumbeat.</p> <p><b>Kids activities</b> School term and holiday fun activities and events</p> <p><b>Transport</b> medical bus and community passenger network</p> <p><b>Access</b> to Centrelink internet and services</p> <p><b>Support services</b> advocacy, Food Bank support Community garden and Grow Free produce sharing cart</p>
--------------------	--

<b>Programs:</b>	<p><b>Commonwealth Home Support Programme (CHSP)</b></p> <ul style="list-style-type: none"> <li>▪ Our Goldie's meals &amp; transport</li> <li>▪ Social Support group &amp; individual – i.e. classes, trips and support</li> <li>▪ Home Maintenance – gardening and safety support</li> <li>▪ Home Modifications – grab rails, ramps</li> <li>▪ Good Equipment and Assistive Technology – self-care/mobility aids,</li> </ul> <p><b>Department of Human Services (DHS) Home and Community Care (HACC)</b></p> <ul style="list-style-type: none"> <li>▪ Social Support group &amp; individual – i.e. classes, trips and support</li> <li>▪ Home Maintenance – gardening and safety support</li> <li>▪ Home Modifications – grab rails, ramps</li> <li>▪ Good Equipment and Assistive Technology – self-care/mobility aids,</li> </ul> <p><b>Department of Human Services (DHS) Murray Mallee Community Passenger Network (MMCPN)</b></p> <ul style="list-style-type: none"> <li>▪ Community Passenger Network delivery area to Coorong, Southern Mallee, Karoonda East Murray LGA</li> </ul>
------------------	---



- Medical bus brokerage delivery area to Coorong, Southern Mallee, Karoonda East Murray, Mid Murray, Rural City of Murray Bridge and Tatiara LGA

**Department of Social Services (DSS) Communities for Children (C4C) Murraylands Program**

- evidenced based learning events, activities for children (age 0-12years) and their families
- Tuning into Kids (emotion coaching)
- Drumbeat (discovering relationships through drumming)
- Seasons for Growth (grief and loss education program)
- Parent Child Mother Goose (strengthens attachment and interaction between parents or carers and their young children)
- School term & holiday activities

**Department of Human Services (DHS) Community Services Support Program (CSSP)**

- Classes and activities
- Community bus hire, transport to events

**The role and strengths of the TBCC**

Established in 1987, the Tailem Bend Community Centre (TBCC) is an independent organisation that supports the diverse needs of Tailem Bend and the surrounding community.

TBCC provides vital community services that are affordable, accessible and targeted to those most in need, with a strong focus on encouraging social interaction and lifelong learning. Services are diverse and include the hire/use of facilities including a modern function room and commercial kitchen, administrative services and the delivery of a wide range of programs for various ages and groups.

The TBCC lease the building facilities from the Coorong District Council, maintaining and making capital improvements through fundraising.

The key objectives of the TBCC are:

1. Increase the community’s access to services and information.
2. Encourage and support social inclusion, volunteering and training.
3. Expand programs, facilities and social enterprise opportunities.
4. Maintain a Service Excellence framework.





**Newsletter February 2018**

Inside this edition  
Term 1 Timetable  
CHSP Bus Trips  
The Wizard of Oz  
and more .....

**WINTER MAGIC**  
Ice skating & Tobogganing

Winter Magic ice skating in the Tailem Bend Town Hall 7-21 January 2018. WE DID IT!! Huge congratulations to Denise McLoughlin for the idea and being brave enough to do it, supported by Chelsea Coombe who also volunteering many hours. Massive thank you to Brian Mitchell and Mike Bristow for donating their electrical knowledge to modify the hall to accommodate it. Thanks to Coorong Council for providing the Town Hall. We hosted two C4C free sessions; over 50 children and their families attending. Disco lights, music, Anna, Elsa & Olaf visits and snow fights, made lots of fun and a great two nights for everyone. \*C4C is facilitated by acare Communities for Children Murraylands and funded by the Department of Social Services.

Rhonda Shillabeer is back Glass n Art leadlight/ mosaic and more. Thursday's 1-4pm

New woodwork tutor Graham Nancarrow is a qualified builder, cabinet maker and furniture restorer. Join him Thursday mornings 9am-12noon.

Classes cost \$5.50 CHSP (65 yrs + or DSP card) or \$11.00 non CHSP

Bus Hire available \$80 per day plus fuel for travel. Bookings essential please call 08 8572 3513.

12 seats including driver, standard vehicle licence required for hire.

Visit our website for more details [www.tbcc.org.au](http://www.tbcc.org.au)

Phone: 8572 3513  
[www.tbcc.org.au](http://www.tbcc.org.au) Info@tbcc.org.au  
141 Railway Terrace, Tailem Bend SA 5260

Programs are Supported by:

- Commonwealth Home Support Programme (CHSP)
- Acares Communities for Children Murraylands programs, funded by the Australian Government Department of Social Services
- Department for Communities and Social Inclusion (DCSI)
- Department of Planning Transport and Infrastructure (DPTI)
- The Coorong District Council (CDC)

The key role of the TBCC is to be facilitators in community engagement. It achieves this by providing essential community services that are not available elsewhere in the area. Providing referrals and information to the community on where and how to access services. The TBCC further strengthens the level of community support by campaigning to secure services for the area on a permanent basis.

The Tailem Bend community has a significant aged population (65 years and over), five percent higher than the State average. To this end, the TBCC is focused on providing social support services such as lifelong learning classes and activities that reduce social isolation. This extends to all age groups, as Tailem Bend is a rural area with limited services and social opportunities.

The TBCC is very effective at communication, with a wide array of methods to disseminate information. This includes a large electronic sign board on the prominent premises, newsletters, advertising, a website and active social media (Twitter and Facebook).

### Future focus

The Murraylands region (population approximately 37,000) is well supported by a range of competent non-government and government organisations that focus on the ‘whole of life’ needs of young people. However, service providers are mostly based in the Rural City of Murray Bridge, and it is widely recognised by the Murraylands Youth Sector Network (MYSN) that there is a need to improve service delivery coordination across the region.

Tailem Bend is in a period of significant growth with the launch of *The Bend Motorsport Park*, a \$160m motor racing precinct 3km from the TBCC, and, in May 2018, the construction of a 100 megawatt solar power facility. These projects combined will create infrastructure worth half a billion dollars and significant, ongoing spending and job creation in the region.



The TBCC has identified a large, unmet gap in services for young people (aged 12-25) in Tailem Bend and surrounding areas that are located outside of Murray Bridge. Services are required to address issues such as lack of public transport, limited higher education options, truancy, social isolation, homelessness, disadvantage and lack of life skills. Additionally, for younger people aged 12-16, the TBCC is actively seeking funding (not currently available) to deliver programs to address their social and life skill needs.

To this end, the TBCC is further developing working relationships with local youth service providers (mostly based in the neighbouring Rural City of Murray Bridge) to identify the range of services available, and lobby for their extended delivery in Tailem Bend. Building solid working relationships with other providers will assist TBCC staff to provide useful information to young people in need and refer them to available services.



### Service delivery area

Currently TBCC delivers services to a total population of 46,146, across a distance of 33,581 square kilometres in the following councils:

Council	Population	Area (square kilometres)
Coorong District Council	5,525	8,836
Southern Mallee	2,063	5,702
Karoonda East Murray	1,125	4,416
Rural City of Murray Bridge	21,163	11,447
Mid Murray	8,844	6,273
Tatiara	6,826	6,526
Callington	383	

### Addressing socio-economic disadvantage

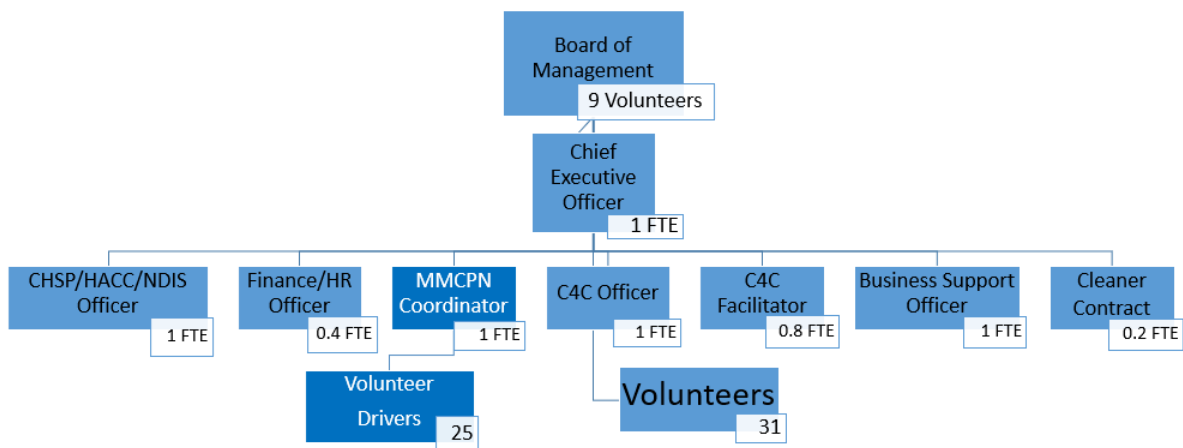
The recent addition of a self-serve ‘Grow Free’ cart, where residents can leave surplus garden produce for others to take as needed, is an initiative recognising that poverty impacts on the ability of people to maintain a healthy diet. Coupled with the Centre’s Community Garden where people can get free vegetables and be engaged in growing them, this is motivation and inspiration to continually develop ideas to address the needs of local residents.

### Additional premises

Although expanded several times, the Community Centre’s activities and services are rapidly outgrowing the current facilities. Various locations are being considered for renovation and refurbishment as additional office space and accommodation.

### Governance

The TBCC is an Incorporated Body, managed by a dedicated volunteer Board of Management Committee, with the assistance of a dedicated group of volunteer staff. A paid CEO is employed five (5) days per week to undertake administrative duties. Supported by three full time and two part time staff TBCC provides extensive services with a total of only 6.2 FTE paid staff.





## Network partners

The TBCC is supported by a number of strategic partners, including Community Centre South Australia (CCSA), the peak body for community centres in SA, and six local government councils. Coorong District Council, which acts as an auspicing body for Commonwealth Home Support Program (CHSP) funding, in addition to providing in-kind support and a community lease of the TBCC premises. Communities for Children Murraylands is facilitated by ac.care, funded by the Australian Government Department of Social Services and delivered by TBCC. Over 15 service clubs use the building during business and after hours hosting meetings annual dinners and functions.

The financial and structural management of the TBCC is widely recognised by community centres throughout South Australia as an excellent model, and the CEO is regularly asked to facilitate sessions with the Committees of other centres on how to develop best practice management and financial models.

TBCC is exceedingly successful with various recurring and no recurrent grant applications the CEO is frequently invited to do grant writing presentations to organisations across neighbouring regions.

## Funding Structure

TBCC funding is derived from a variety of sources, including:

### 1. Commonwealth Home Support Programme (CHSP) (Department of Health)

The Coorong District Council (CDC) auspice the CHSP Grant, meaning the money is paid to the CDC who then distributes it to TBCC. The CHSP grant is assistance for people 65 years and above (50 years for Aboriginal and Torres Strait Islander peoples ATSI) secured until June 2022.

### 2. Department of Human Services (DHS) Home and Community Care (HACC)

The Coorong District Council (CDC) also auspice the HACC Grant assists people under 65 years with a disability living in the Coorong or Rural City of Murray Bridge (RCMB). TBCC is a registered National Disability Insurance Scheme Provider (provider number 4050013121) which will supersede HACC in June 2022.

### 3. Department of Human Services (DHS) Murray Mallee Community Passenger Network

**Community Passenger Network** delivery area to Coorong, Southern Mallee, Karoonda East Murray LGA. Services are for transport dis-advantaged regardless of age.

**Medical bus brokerage** delivery area to Coorong, Southern Mallee, Karoonda East Murray, Mid Murray, Rural City of Murray Bridge and Tatiara LGA medical appointments for transport disadvantaged.

### 4. Department of Social Services (DSS) Communities for Children (C4C) Murraylands Program (ac.care)

Provides activities for children 0-12 years and their families, with evidence based learning events and activities. The C4C grant is secured until June 2021.

### 5. Department of Human Services (DHS) Community Services Support Program (CSSP)

The TBCC receives Community and Development funding from DHS, which provides a suite of community programs, projects and activities delivered to develop personal resilience and connected contribution to community. Programs are funded until 2021 with possible three year extension and reviewed with Results Based Accountability quality improvement framework.



## 5. General Funds

Income from fundraising, class fees and clients contribute to TBCC’s general operation costs. These funds are used as required for centre maintenance and running costs and to extend service delivery wherever possible. These funds also form a small cash reserve for emergency situations.

## 6. One-off Grants

TBCC has successfully attracted a number of one off grants to support a range of programs and infrastructure improvements. The TBCC continues to actively seek new grant opportunities and recent successes include:

- \$50,000 DHS Grant Funding SA (Community Mini Bus Project)
- \$49,400 DHS Community Benefit Grant (Breezeway Benefit Infrastructure Project)
- \$12,500 DHS Community Benefit Grant (Solar Sustainability Project)
- \$3,000 FRR Foundation for Rural and Regional Renewal (Solar Sustainability Project)
- \$3,000 Our Well Being Place Murray Bridge (Community Garden)
- \$5,000 Year of the Farmer Gala Dinner (Breezeway Project)
- \$20,000 DHS Community Benefit Grant (Art and Lifestyle Shed Project)

In November 2017 TBCC purchased a twelve seat mini bus to offer clients outings, shuttle to events and private hire for community members.

The last three years we have focussed on sustainability and reducing environmental impact. 2015 we installed 80 solar panels. In 2019 we added another 10kw solar and 6.6kw battery system.

## Community Profile

Source: 2016 ABS Census Data ([www.censusdata.abs.gov.au](http://www.censusdata.abs.gov.au)) for The Coorong DC (Local Government Area).

The SEIFA Index of Relative Socio-Economic Disadvantage (derived from Census variables related to disadvantage, such as low income, low educational attainment, unemployment, as well as variables that reflect disadvantage rather than measure specific aspects of disadvantage) rates the Coorong District at **948.7**. This places the district in the top 10% of rankings (Australian and South Australian communities) for socio-economic disadvantage.

## Population

People	The Coorong (DC)	%	South Australia	%	Australia	%
<i>Persons count based on place of usual residence on Census night</i>						
Male	2,758	51.3	825,997	49.3	11,546,638	49.3
Female	2,619	48.7	850,652	50.7	11,855,248	50.7
Aboriginal and/or Torres Strait Islander people	328	6.1	34,184	2.0	649,171	2.8

In the 2016 Census, there were 5,380 people in The Coorong (DC) (Local Government Areas). Of these 51.3% were male and 48.7% were female. Aboriginal and Torres Strait Islander people made up 6.1% of the population, which is significantly higher than the State (2.0%) or National (2.8%) average.

The median age of people in The Coorong (DC) (Local Government Areas) was 46 years, compared to 44 years in the 2011 Census. Children aged 0 - 14 years made up 18.1% of the population and people aged 65 years and over made up 22.7% 19.0% of the population (up from 19% in 2011), higher than the State average of 18.2%.



Age	The Coorong (DC)	%	South Australia	%	Australia	%
Median age	48	--	40	--	38	--
0-4 years	323	6.0	97,072	5.8	1,464,779	6.3
5-9 years	318	5.9	100,466	6.0	1,502,646	6.4
10-14 years	335	6.2	95,461	5.7	1,397,183	6.0
15-19 years	295	5.5	100,680	6.0	1,421,595	6.1
20-24 years	236	4.4	107,996	6.4	1,566,793	6.7
25-29 years	265	4.9	107,361	6.4	1,664,602	7.1
30-34 years	248	4.6	110,751	6.6	1,703,847	7.3
35-39 years	295	5.5	102,818	6.1	1,561,679	6.7
40-44 years	282	5.2	106,950	6.4	1,583,257	6.8
45-49 years	310	5.7	113,619	6.8	1,581,455	6.8
50-54 years	444	8.2	113,272	6.8	1,523,551	6.5
55-59 years	428	7.9	111,896	6.7	1,454,332	6.2
60-64 years	397	7.4	102,028	6.1	1,299,397	5.6
65-69 years	400	7.4	96,296	5.7	1,168,989	5.1
70-74 years	353	6.5	72,663	4.3	887,716	3.8
75-79 years	234	4.3	53,895	3.2	652,657	2.8
80-84 years	127	2.4	39,374	2.3	460,540	2.0
85 years and over	112	2.1	44,479	2.7	486,842	2.1

Young people aged 10-24 years made up 16.1% of the population, which is a future focus group of the TBCC (12-25 years).

### Family Composition

In 2016, there were 1,476 families in The Coorong DC. There was an average of 2 children per family.

Family composition	The Coorong (DC)	%	South Australia	%	Australia	%
Couple family without children	731	50.5	178,588	40.2	2,291,987	37.8
Couple family with children	486	33.6	184,733	41.6	2,716,224	44.7
One parent family	207	14.3	73,128	16.5	959,543	15.8
Other family	24	1.7	7,282	1.6	102,559	1.7

Of the families in The Coorong (DC) (Local Government Areas), 33.6% were couple families with children, 50.5% were couple families without children and 14.3% were one parent families.

Single (or lone) parents	The Coorong (DC)	%	South Australia	%	Australia	%
<i>Proportion of the total single (or lone) parent population</i>						
Male	--	24.5	--	19.4	--	18.2
Female	--	75.5	--	80.6	--	81.8

In The Coorong (DC) (Local Government Areas) 24.5% of single parents were male and 75.5% were female.

### Wealth

In The Coorong (DC) (Local Government Areas) the median weekly household income was \$929, up by \$144 since the 2011 Census. Median monthly mortgage repayments were \$867, and median weekly rent was \$125, up from \$110 in 2011.

Median weekly incomes	The Coorong (DC)	%	South Australia	%	Australia	%
<i>People aged 15 years and over</i>						
Personal	499	--	600	--	662	--
Family	1,164	--	1,510	--	1,734	--
Household	929	--	1,206	--	1,438	--

In The Coorong (DC) (Local Government Areas), 31.7% of households had a weekly household income of less than \$650, compared to the state average of 23.8%.

5.4% of households in the DC area had a weekly income of more than \$3,000, compared to the state average 10.7%.

This data suggests that the area is disadvantaged.





## Employment

Employment	The Coorong (DC)		South Australia		Australia	
<i>People who reported being in the labour force, aged 15 years and over</i>		%		%		%
Worked full-time	1,380	57.4	435,110	53.9	6,623,065	57.7
Worked part-time	787	32.7	270,409	33.5	3,491,503	30.4
Away from work	119	4.9	40,582	5.0	569,278	5.0
Unemployed	119	4.9	60,488	7.5	787,452	6.9

There were 2,167 people who reported being in the labour force in the week before Census night in The Coorong (DC) (Local Government Areas). Of these 57.4% were employed full time and 32.7% were

Employment - hours worked	The Coorong (DC)		South Australia		Australia	
<i>Employed people aged 15 years and over</i>		%		%		%
1-15 hours per week	287	12.5	95,282	12.8	1,218,823	11.4
16-24 hours per week	227	9.9	77,283	10.4	1,079,236	10.1
25-34 hours per week	282	12.3	97,844	13.1	1,193,445	11.2
35-39 hours per week	286	12.4	153,550	20.6	2,031,263	19.0
40 hours or more per week	1,098	47.7	281,566	37.7	4,591,801	43.0

employed part-time. 4.9% reported being unemployed.

Of employed people in The Coorong (DC) (Local Government Areas), 12.5% worked 1 to 15 hours, 9.9% worked 16 to 24 hours and 47.7% worked 40 hours or more.

Industry of employment, top responses	The Coorong (DC)		South Australia		Australia	
<i>Employed people aged 15 years and over</i>		%		%		%
Beef Cattle Farming (Specialised)	151	7.0	1,885	0.3	44,309	0.4
Sheep Farming (Specialised)	129	6.0	2,915	0.4	18,197	0.2
Grain-Sheep or Grain-Beef Cattle Farming	111	5.1	2,505	0.3	15,056	0.1
Dairy Cattle Farming	101	4.7	1,232	0.2	20,326	0.2
Other Grain Growing	77	3.6	3,586	0.5	19,053	0.2

Of the employed people in The Coorong (DC) (Local Government Areas), 26.4% worked in Sheep, Beef Cattle and Grain Farming.

Occupation	The Coorong (DC)		South Australia		Australia	
<i>Employed people aged 15 years and over</i>		%		%		%
Managers	719	31.3	94,075	12.6	1,390,047	13.0
Labourers	398	17.3	82,850	11.1	1,011,520	9.5
Technicians and Trades Workers	211	9.2	100,142	13.4	1,447,414	13.5
Community and Personal Service Workers	201	8.8	89,625	12.0	1,157,003	10.8
Clerical and Administrative Workers	192	8.4	99,540	13.3	1,449,681	13.6
Professionals	188	8.2	151,091	20.3	2,370,966	22.2
Sales Workers	183	8.0	71,761	9.6	1,000,955	9.4
Machinery Operators and Drivers	175	7.6	45,515	6.1	670,106	6.3

The most common occupations in The Coorong (DC) (Local Government Areas) included Managers 31.3%, Labourers 17.3%, Technicians and Trades Workers 9.2%, Community and Personal Service Workers 8.8%, Clerical and Administrative Workers 8.4%.





## Education

Education	The Coorong (DC)	%	South Australia	%	Australia	%
Preschool	71	5.1	20,292	4.2	347,621	4.8
Primary - Government	413	29.5	94,526	19.5	1,314,787	18.2
Primary - Catholic	6	0.4	26,196	5.4	380,604	5.3
Primary - other non Government	39	2.8	22,589	4.7	231,490	3.2
Secondary - Government	237	16.9	52,721	10.9	827,505	11.5
Secondary - Catholic	10	0.7	19,484	4.0	338,384	4.7
Secondary - other non Government	58	4.1	21,053	4.3	280,618	3.9
Technical or further education institution	48	3.4	31,394	6.5	424,869	5.9
University or tertiary institution	42	3.0	78,780	16.2	1,160,626	16.1
Other	38	2.7	11,501	2.4	198,383	2.8
Not stated	440	31.4	106,438	21.9	1,707,023	23.7

In The Coorong (DC) (Local Government Areas) 26.1% of people were attending an educational institution. Of these, 33% were in primary school, 22.2% in secondary school and 6.5% in a tertiary or technical institution. The percentage of people in The Coorong who attend a tertiary or technical institution is significantly lower than the state and national average, with university or tertiary attendance less than a quarter of the state and national averages.

## Volunteering

Unpaid work <i>People aged 15 years and over</i>	The Coorong (DC)	%	South Australia	%	Australia	%
Did unpaid domestic work (last week)	3,102	70.4	982,036	71.0	13,143,914	69.0
Cared for child/children (last two weeks)	1,154	26.2	380,737	27.5	5,259,400	27.6
Provided unpaid assistance to a person with a disability (last two weeks)	568	12.9	168,496	12.2	2,145,203	11.3
Did voluntary work through an organisation or group (last 12 months)	1,564	35.5	295,670	21.4	3,620,726	19.0

In The Coorong (DC) (Local Government Areas), of people aged 15 years and over, 70.4% did unpaid domestic work in the week before the Census. During the two weeks before the Census, 26.2% provided care for children and 12.9% assisted family members or others due to a disability, long term illness or problems related to old age. In the year before the Census, 35.5% of people did voluntary work through an organisation or a group (significantly higher than the state average of 21.4%).

## Want to know more?



Contact our CEO, Tammy Shepherd by phone 8572 3513 or email [ceo@tbcc.org.au](mailto:ceo@tbcc.org.au)



Visit us at 141 Railway Tce, Tailem Bend SA 5260



Check us out at [www.tbcc.org.au](http://www.tbcc.org.au)



Tailem Bend Community Centre Inc



@TBCC\_EST\_1987





**Computer training room and public use kiosk**

**TBCC Function Room below**



**TBCC front reception Office**

**Full commercial kitchen**



**Art &**

**Lifestyle Shed left**



**Woodwork Shed**

**Community garden below**



**Community Passenger Network**

**Community Bus hire**

