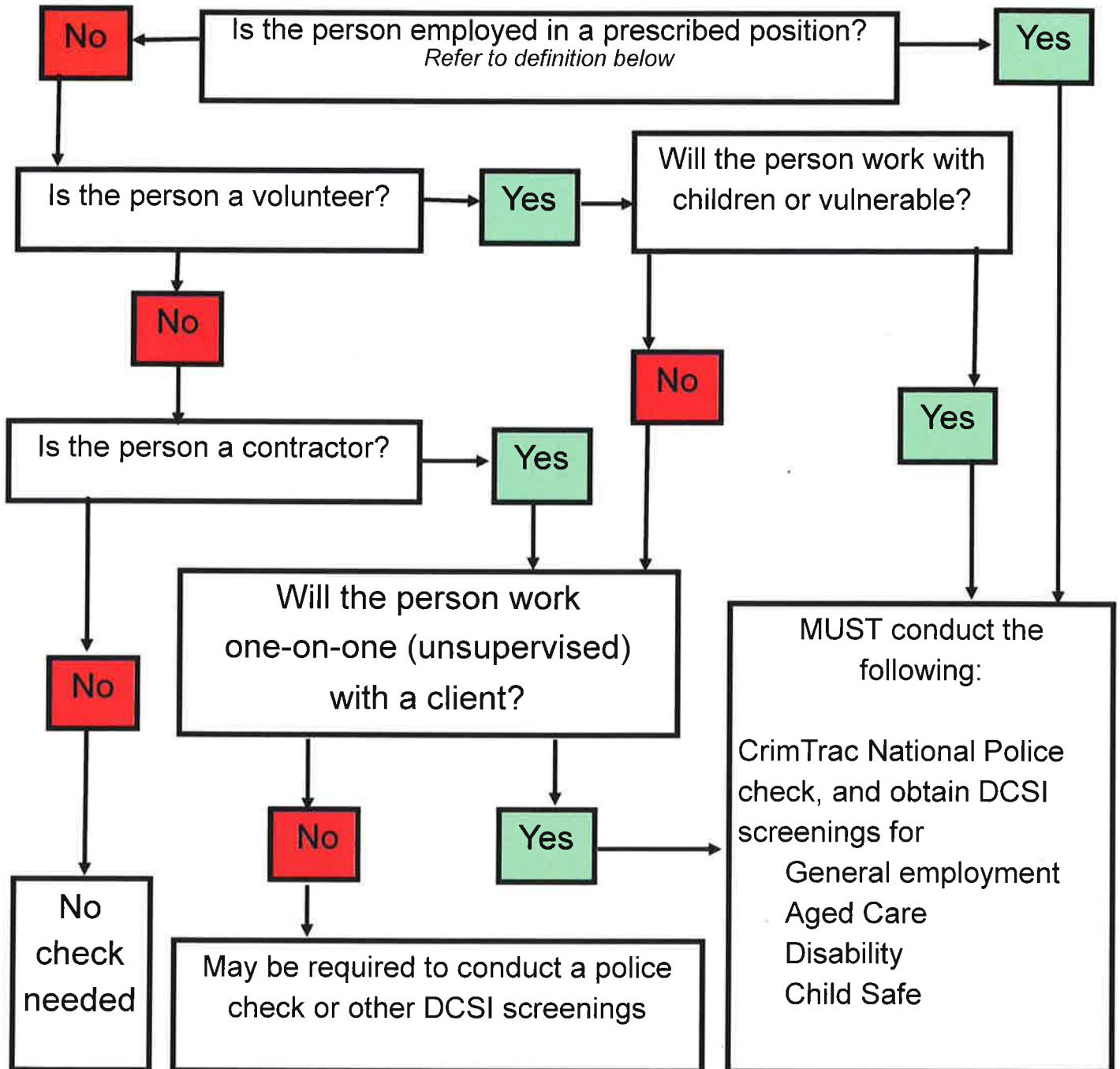




# HR Criminal History Check Flow Chart

What Police checks/ screenings will I need to work/volunteer at the Taillem Bend Community Centre?



## Definition 'prescribed position'

The [Children's Protection Act 1993 \(SA\)](#) defines a 'prescribed position' as one in which a person is engaged in the following:

- regular contact with children or working in close proximity to children on a regular basis, unless the contact or work is directly supervised at all times; or
- supervision or management of persons in positions requiring or involving regular contact with children or working in close proximity to children on a regular basis; or
- access to records of a kind prescribed by regulation relating to children; or
- functions of a type prescribed by [regulation](#) (see Regulation 10).

<b>Date first formulated</b>	12/09/2005	
<b>Dates approved by Board</b>	V1	June 2016
<b>Next Review Date</b>	August 2019	
<b>Related Documents</b>	HR Equal Opportunity Strategy Position Description HR Conflict and Grievance Strategy and Procedures Recruitment of Staff policy ?? DFC Funding Agreement HR Criminal History Check Strategy HR Criminal History Check Procedures	
<b>Signed on behalf of TBCC Board of Management by:</b>		
<b>Name:</b>	LORRAINE CRESP	
<b>Position held:</b>	Chairperson	<b>Signature:</b> 